



### Weight

Operating weight 11 300 kg

### Engine

Type Deutz, TCD 3.6 L4  
Fuel Diesel  
Displacement 3600 cm<sup>3</sup>  
Number of cylinders 4  
Engine power 85 kW (116 CV)  
Battery 12 V / 135 Ah

### Performance

Travelling speed 2,7 / 5,4 km/h  
Digging force (arm) 61 kN  
Digging force (bucket) 81,5 kN  
Drawbar pull 83,58 kN  
Grade ability 60%

### Hydraulic system

Maximum pressure 350 bar  
Maximum pump capacity 190 l / min

### Undercarriage

Idle suspension with hydraulic crawler-chain tensioning  
Width rubber crawlers / steel crawlers 500 / max. 800 mm  
Total length (sprocket - idler) 2628 / 2608 mm  
Total length (undercarriage) 3345 mm

### Capacities

Fuel tank 240 l  
Hydraulic tank 230 l

### Standard equipment

### Optional equipment

Monobloc boom with dipperstick 1850 mm  
Biodegradable hydraulic oil  
Open return Float position dozer blade  
Excavator control changeover: ISO-SAE  
1 double beam working floodlight  
FOPS - skylight guard  
Operator's seat (premium version) with air damping  
Backrest heating  
Quick-attach system, mechanical and hydraulic  
Special coating / adhesive films

### Dimensions

Fig. 1:  
Working envelope

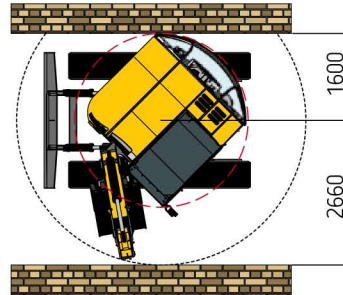
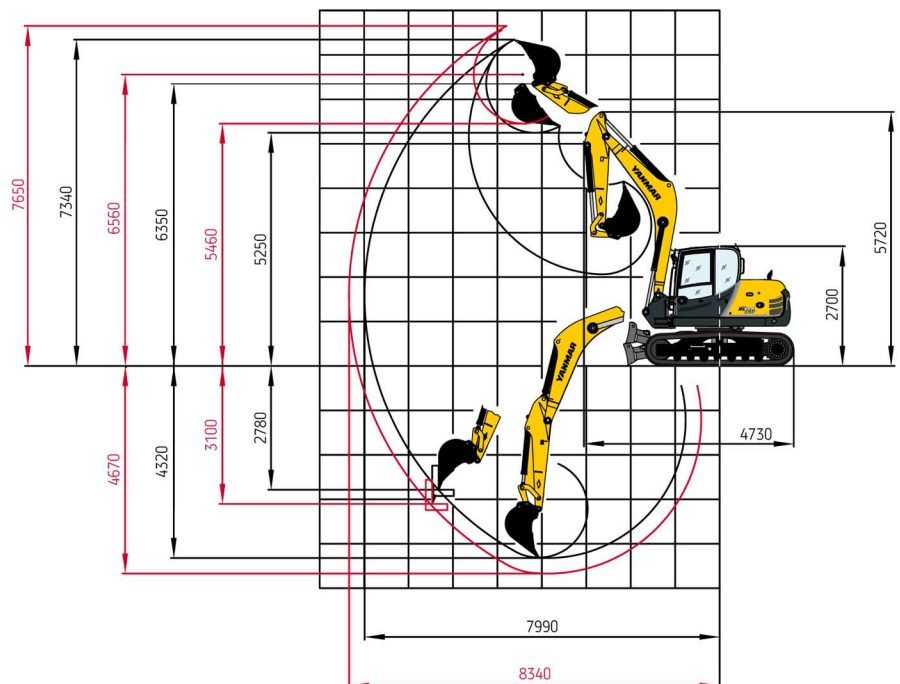
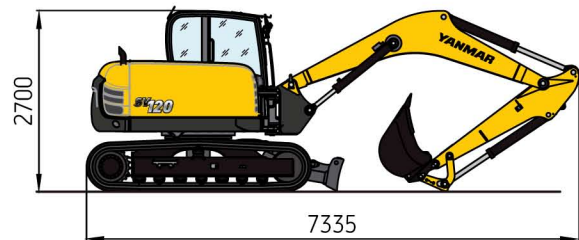


Fig. 2:  
Transport position

Monobloc boom



— Dipperstick 2000 mm  
— Dipperstick 2350 mm